

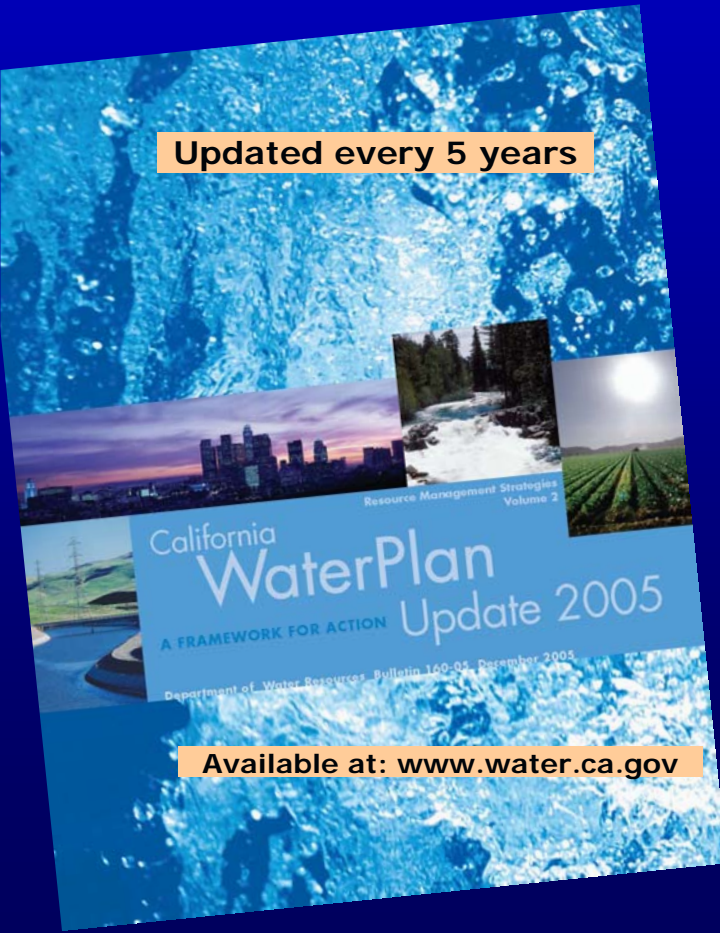
Integrated Regional Water Management

California Watershed Network
March 20, 2007

John Woodling
California Dept. of Water Resources

Integrated Regional Water Management

A cornerstone of the California Water Plan



Updated every 5 years

California
WaterPlan
Update 2005

A FRAMEWORK FOR ACTION
Department of Water Resources Bulletin 160-01, December 2005

Available at: www.water.ca.gov

Vital Economy
Healthy Environment
High Standard of Living

Implement
Integrated
Regional Water
Management

Improve
Statewide Water
Management
Systems

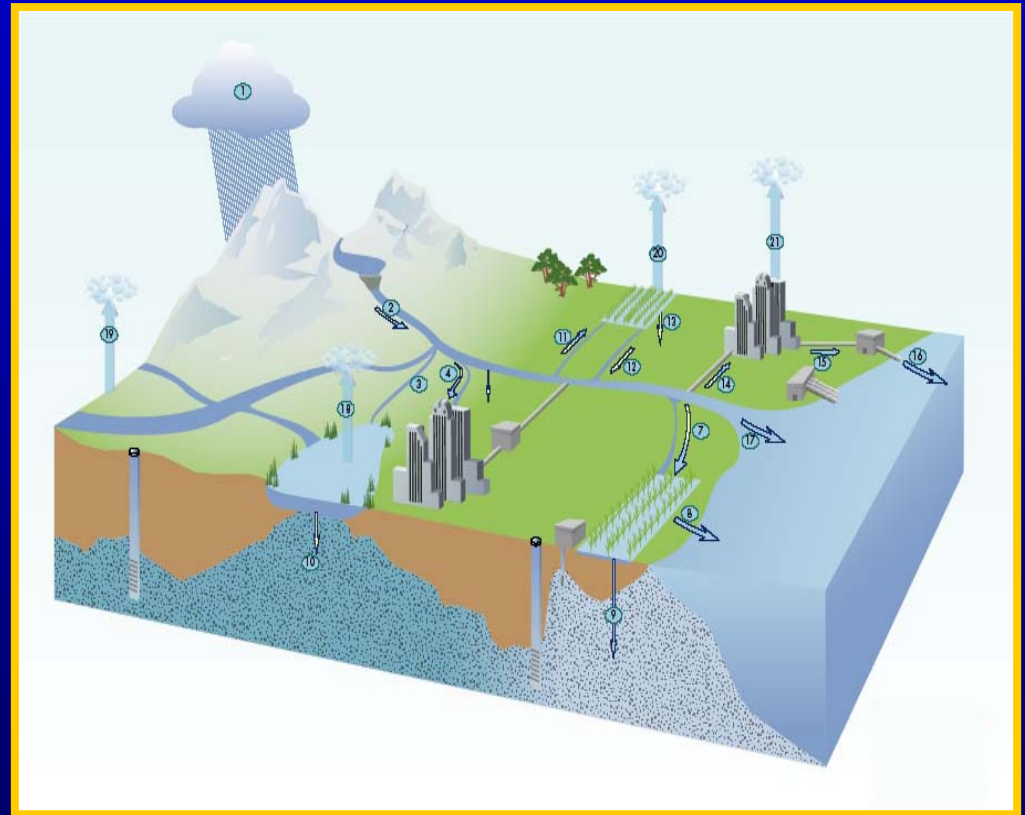
Use
Water
Efficiently

Protect
Water
Quality

Support
Environmental
Stewardship

Integrated Regional Water Management

- Foster Regional Partnerships and Resolve Conflicts
- Integrate Resources Management Decisions
- Diversify Regional Water Portfolios
- Reduce Costs and Maximize Value
- Provide for Sustainability



What is Integration?

Consideration of:

- Water quality and water quantity
- Demand management and supply enhancement
- All water uses (ag, urban, environmental, etc.)
- Upstream, downstream, and instream uses
- Multiple management options
- Other planning processes and resources (land use, flood control, energy, air quality, transportation, etc.)
- Broader societal costs and benefits

Resource Management Strategies

Reduce Water Demand

- Agricultural Water Use Efficiency
- Urban Water Use Efficiency

Improve Operational Efficiency & Transfers

- Conveyance
- System Reoperation
- Water Transfers

Increase Water Supply

- Conjunctive Management & Groundwater Storage
- Desalination –Brackish & Seawater
- Precipitation Enhancement
- Recycled Municipal Water
- Surface Storage – CALFED
- Surface Storage - Local

Improve Water Quality

- Drinking Water Treatment and Distribution
- Groundwater/Aquifer Remediation
- Matching Quality to Use
- Pollution Prevention
- Urban Runoff Management

Practice Resource Stewardship

- Agricultural Lands Stewardship
- Economic Incentives (Loans, Grants, and Water Pricing)
- Ecosystem Restoration
- Floodplain Management
- Recharge Areas Protection
- Urban Land Use Management
- Water-Dependent Recreation
- Watershed Management

Planning Considerations

- Defining a region and identifying stakeholders
- Objective setting
- Institutional framework for planning
- Funding
- Data collection and analysis
- Project Evaluation/Prioritization
- Implementation
- Measuring performance
- Ongoing planning

*...plans are useless, but
planning is indispensable.*

- Dwight Eisenhower -

What is a Region?

Geography

Interrelationships

What is a Region?

\$\$\$

Regions



Local Agency

What is a Region?



Sacramento River Watershed

American River Watershed

Regions

Water Forum

Sacramento County

North American GW Basin

San Juan Family



San Juan Water District

Regional Governance

- **Local agency and local government autonomy**
- **Implementation that achieves regional objectives**



A Brief History of IRWM Implementation

- Proposition 40 – March 2002
- SB 1672 (Costa) – September 2002
- AB 2534 (Pavley) – September 2002
- Proposition 50 – November 2002
- California Water Plan - 2005
- Proposition 84 - 2006
- Numerous Regional Efforts

Program Objectives

- Improve water supply reliability
- Protect & improve water quality
- Ensure sustainability through environmental stewardship

- Promote multiple benefits

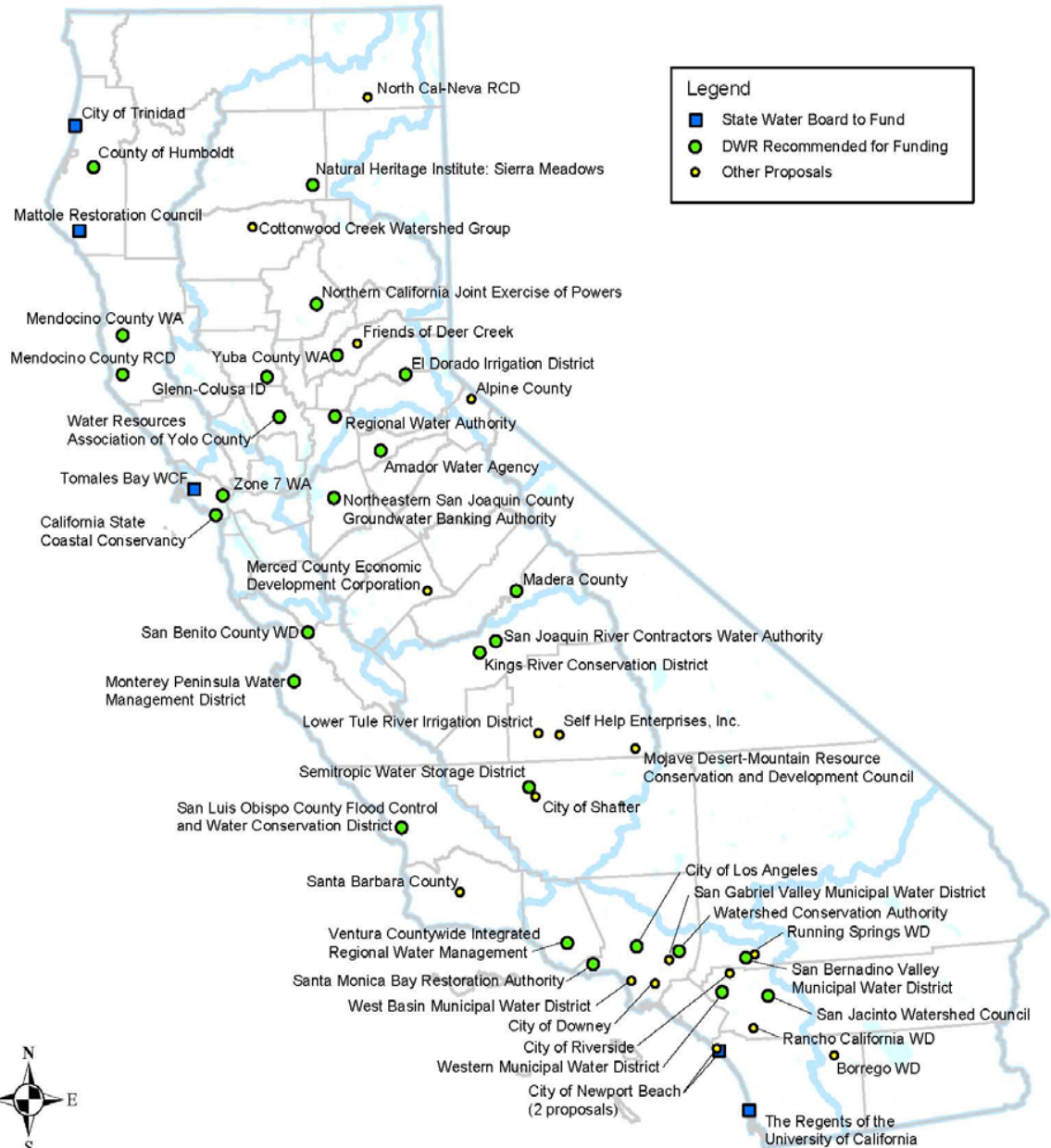
- Financial incentive to promote integration and regional planning

- Streamline grant processes

IRWM Planning Grants

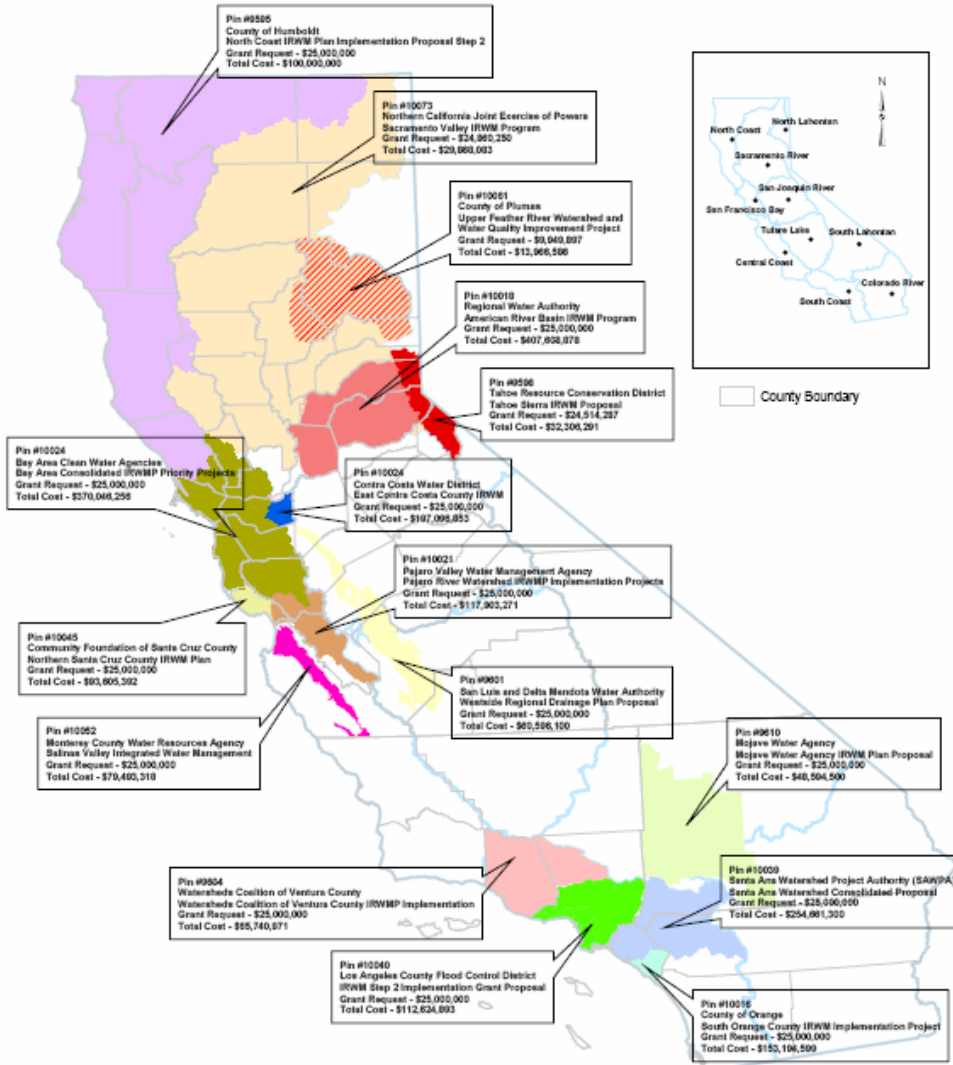
Legend

- State Water Board to Fund
- DWR Recommended for Funding
- Other Proposals



California Environmental Protection Agency
STATE WATER RESOURCES CONTROL BOARD

**Proposition 50, Chapter 8
Integrated Regional Water Management Program
Implementation Grant - Step 2**



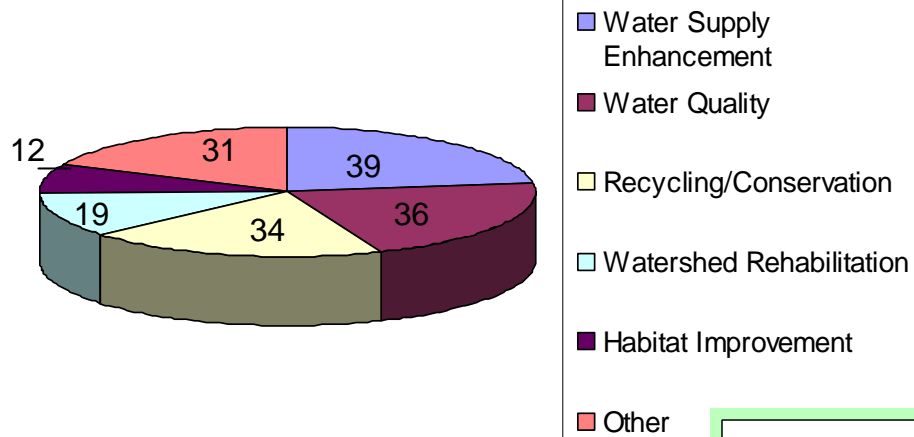
Future Water Supply Improvements

Proposition 50 IRWM Grants

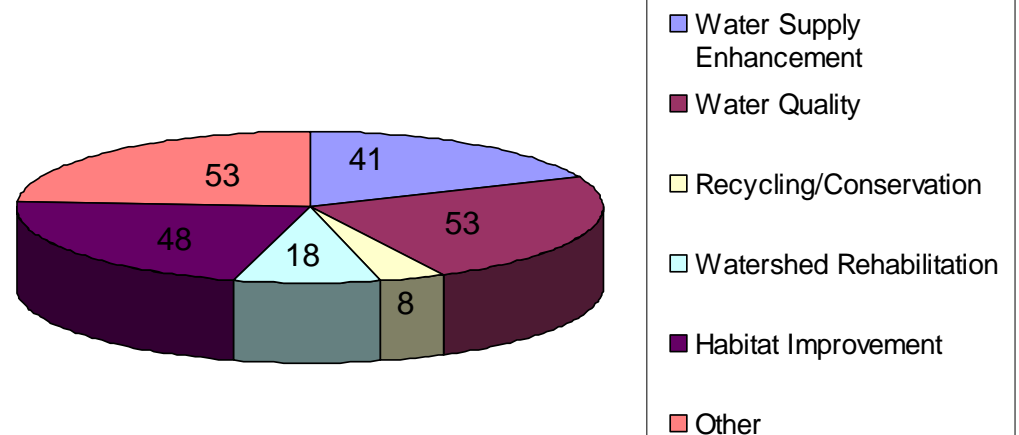
- \$307 million to 16 proposals
- \$1.7 billion local cost share
- 500,000 acre-feet of new supply

Other Benefits

Proposition 50 IRWM Projects
Primary Benefit



Proposition 50 IRWM Projects
Additional Benefits

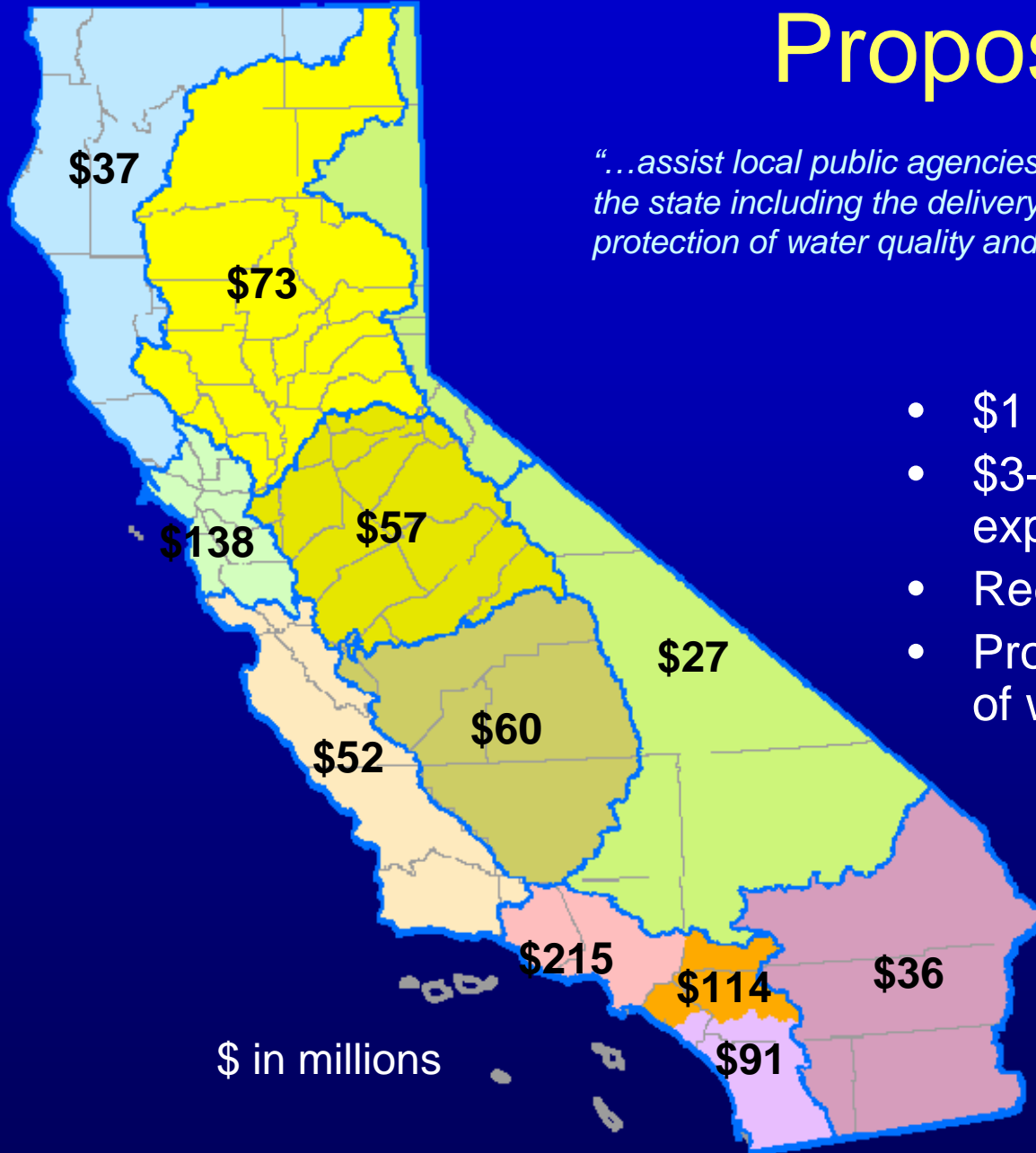


What's next

- Evaluate lessons learned
- Revise guidelines and PSPs
- Second Prop 50 funding cycle - \$64 million
- Prop 84 - \$1 billion for IRWM

Proposition 84

"...assist local public agencies to meet long term water needs of the state including the delivery of safe drinking water and the protection of water quality and the environment."



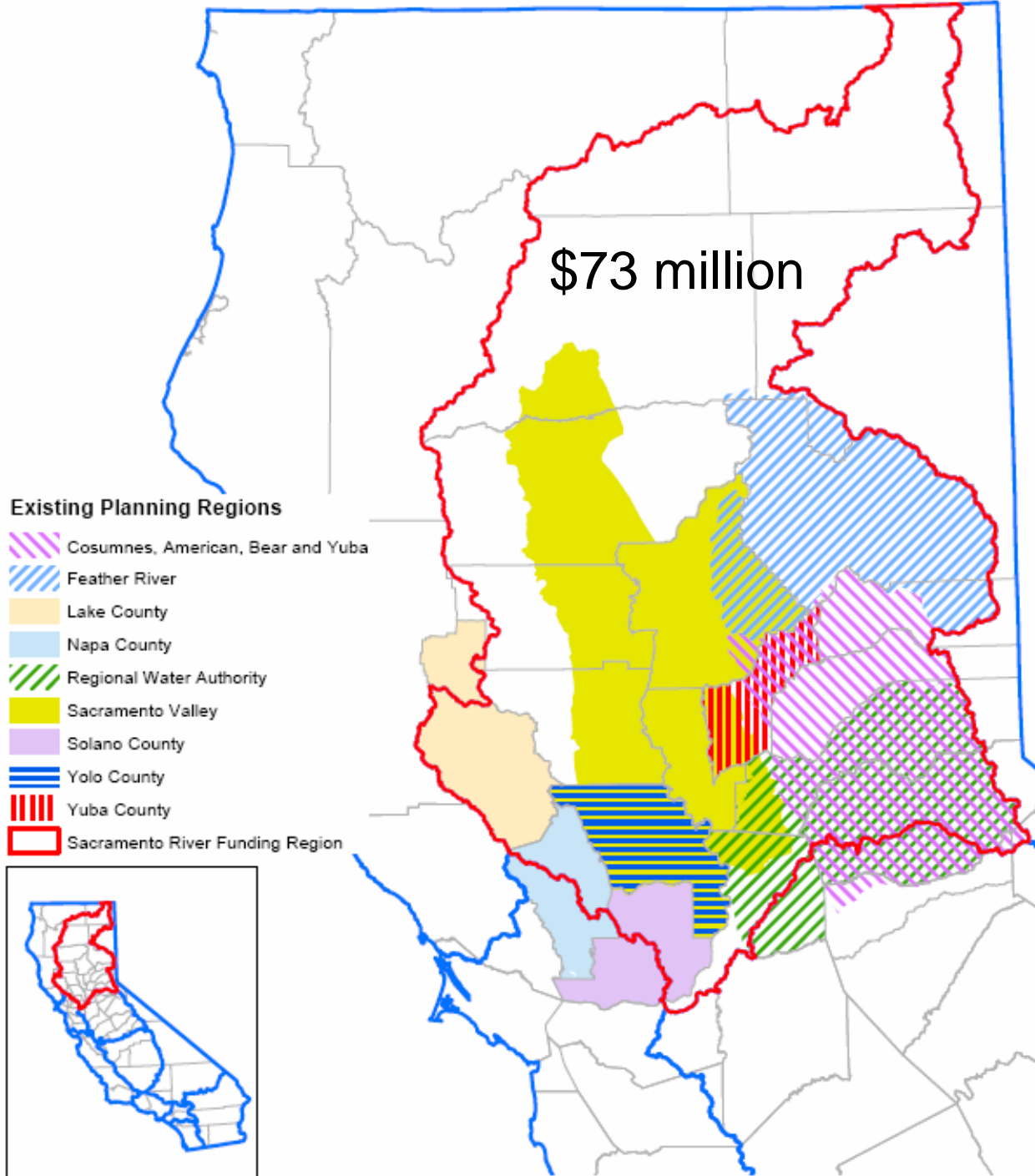
- \$1 Billion for IRWM grants
- \$3-4 billion local cost share expected
- Regional allocations
- Projected 1.2 million acre-feet of water supply

Regional Meetings

- Central Coast – 2/26
- Tulare Lake Basin – 2/27
- Sacramento River – 3/1
- San Francisco Bay – 3/5
- San Diego – 3/12
- Los Angeles-Ventura – 3/14
- San Joaquin River – 3/16
- Colorado River – 3/20

- North Coast – 3/22
- Santa Ana River – 3/27
- North-South Lahontan – 4/3

Defining IRWM Regions



Some Possibilities for the Future

- Additional Effort on IRWM Plans
 - More planning grants
 - Closer DWR coordination
- More Rigorous Planning Process Standards
 - Inclusiveness
 - Measurable Objectives
 - Regional Project Screening Criteria
- More Broadly Scoped Regional Plans
 - Land Use
 - Energy Use
 - Climate Change/GHG emissions
 - Flood Management

More Possibilities for the Future

- Right-sizing the Regions
 - Multi-scale Planning
- Less Rigorous Review of Projects
 - More Regional Control
- Better Measurement of Performance
- More Equitable Distribution of Funds
- Implementing Legislation?
- Cross-program, Cross-bond integration

Closing Thoughts

- IRWM is a new paradigm...not a grant program
- We don't have all the answers...or even all the questions yet
- Don't let that keep you from starting
- If it's easy, you're not doing it right
- When you think you're finished, congratulate yourselves and then think about what to do next
- Make your planning serve local and regional needs...state funding is a bonus