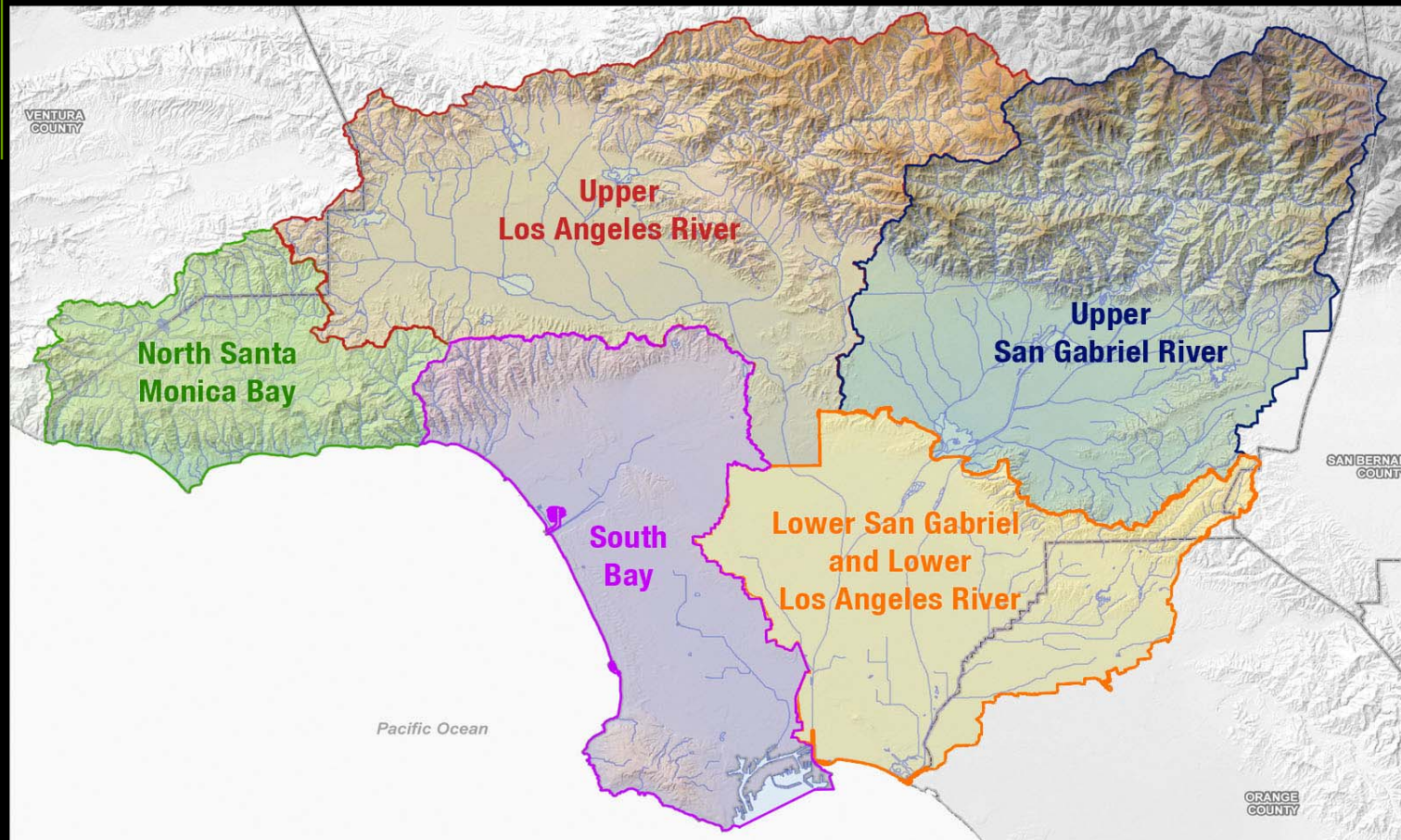

Greater Los Angeles County Region

Integrated Regional Water Management Plan

*Comprehensive planning that has and will continue to
encourage cooperation, not competition.*

Greater LA County Region



- Nearly 10 million people
- Hundreds of agencies/organizations involved
- Encompasses 92 cities
- Approx. 2,200 square miles
- 28% of California's population



Complex water and environmental issues

- Drinking water - majority is imported
- Urban & Stormwater - contaminated by sediments, nutrients, bacteria, metals, oil and grease
- Groundwater - insufficient natural recharge to maintain basin water and current pumping levels
- Natural Habitat - has been extensively displaced by urban growth
- Coastal Wetlands - 90% has been lost

Accomplishments

- Four large watershed based IRWM efforts:
 - City of Los Angeles
 - West Basin Municipal Water District
 - Santa Monica Bay Restoration Authority
 - Watershed Conservation Authority
- Two smaller IRWM efforts:
 - City of Downey
 - San Gabriel Valley Municipal Water District





Accomplishments

- Secured \$1.5 M Prop 50 State grant to develop IRWMP
- Collected \$950K in local funding plus hundreds of hours in in-kind services to develop IRWMP
- Formed a Leadership Committee and five Sub-regional Steering Committees (governance structure)
- Developed and adopted Interim Operating Guidelines (decision making guidelines)



Accomplishments

- Developed planning tools (conceptual capture and treatment projects) to promote project integration
- Over 1,500 projects submitted and included in IRWMP
- Held 24 public stakeholder workshops
- MOU adopted by 28 agencies to date
- *Developed quantifiable targets for the next 20 years*
- *Recommended for Prop 50, Chap 8 Round 1 funding (\$25 Million!)*
- *Adopted IRWMP on December 13, 2006!*



Success Factors

1. Region based on the watershed boundaries in the lower basin of Los Angeles County

- Water quality, water supply, open space and recreational issues do not necessarily follow political boundaries
- To address issues using a holistic watershed approach
- Watershed stakeholder network already established

Success Factors

2. *Simple governance and decision making structure/process*

- Developed and adopted basic and informal governance structure and process
- Established Leadership and five Sub-regional Steering Committees
- *No formal MOU, agreement or binding document until just recently*

Success Factors

Leadership Committee
Chair
IRWMP Program Manager
Los Angeles County Flood Control District

Sub-Regional Representation

North Santa Monica Bay
Watersheds

Las Virgenes MWD

South Bay
Watersheds

West Basin MWD

Upper LA River
Watersheds

City of LA Dept. of Water & Power

**Upper San Gabriel &
Rio Hondo River**
Watersheds

Main San Gabriel Basin
Watermaster

**Lower San Gabriel &
LA River**
Watersheds

Watershed Conservation
Authority

Water Management Area Responsibility Representation

Groundwater

San Gabriel Basin Water
Quality Authority

Sanitation

County Sanitation Districts of
Los Angeles County

Surface Water

Gateway Cities Council of
Governments

Habitat/Open Space

Santa Monica Bay
Restoration Commission

Stormwater/Water Quality

City of LA Bureau of Sanitation
Watershed Protection Division

Invited Ex-Officio Non-voting Members

Bureau of Reclamation

CA Dept. of Fish & Game

CA Coastal Commission

CA Coastal Conservancy

CA Dept. of Transportation

CA Dept. of Water Resources

CA Environmental Protection Agency

CA Regional Water Quality Control Board

CA Dept. of Parks & Recs

CA Dept. of Health Services

Metropolitan Water District

National Parks Service

U.S Army Corps of Engineers

USDA Forest Service

Watershed Council



Success Factors

3. *Provide planning tools to foster development of regional/integrated projects*

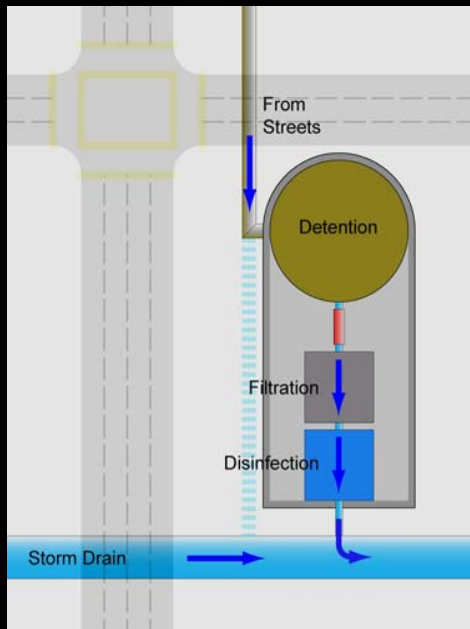
- Projects that incorporate multiple water management strategies and provide multiple benefits
- Projects that involves multiple agencies/organizations for more effective use of resources
- Projects that cross political and regional boundaries

Water supply and water quality projects have the potential to contribute towards other regional needs.

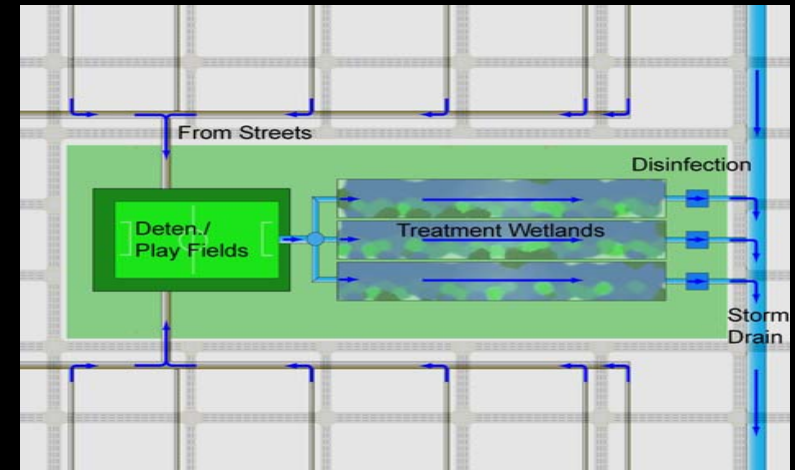
Habitat, open space, and parkland projects have the potential to generate water supply and water quality benefits.

Success Factors

*(Conceptual Runoff
Capture and Treatment)*



*Planning Tool #1
Site Scale*



*Planning Tool #2
Neighborhood Scale*



*Planning Tool #3
Regional Scale*



Success Factors

4. *Develop quantifiable targets for the next 20 years*

- To provide direction and focus
- To address the water resource needs
- To measure how well the region is meeting its needs
- To help define projects
- *To show the public, stakeholders and elected officials that the region wants to achieve results*

Success Factors

- ◆ Water Quality: *Reduce, capture, infiltrate and/or treat the 90th percentile dry weather urban runoff flow, approximately 320,000 acre-feet per year.*
- ◆ Water Supply: *Increase water supply and/or reduce demand by 800,000 acre-feet per year.*
- ◆ Open Space/Parks: *Develop 30,000 acres of multiuse parkland and open space.*
- ◆ Sustain Local Communities: *Repair and replace 40 percent of the infrastructure.*

Next Steps



- Develop a project prioritization framework
- Develop regional/integrated projects for funding by sub-region (capital improvement program)
- Governance structure...identify opportunities to improve and evolve
- Continue and expand outreach specially to disadvantaged communities



Greater LA County Region

IRWMP

Questions...Comments?

Thank you very much for your attention.

www.lawaterplan.org

Hector J. Bordas

626/458-5947

hbordas@dpw.lacounty.gov